

CATALOG

Quality & Tradition



**WEBSTER CITY
CUSTOM MEATS**

 **MIDWEST
QUALITY
WHOLESALE.**
A DIVISION OF

Our success depends on the success of our customers.



Webster City Custom Meats specializes in wholesale custom meat processing of smoked ham, smoked bacon, fresh sausage products, and smoked pork loins. We also have a variety of specialty items. Our raw material is sourced primarily from the Midwest.

Our products are always delivered fresh. You can be assured of the same quality and tradition you've come to know and trust from Webster City Custom Meats.

Our success depends on the success of our customers.



HAM



BUFFET HAMS

BONELESS BUFFET HAM



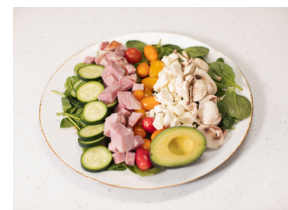
Bell's Mill Label
Hickory Smoked - No artificial smoke
Fully Cooked
One muscle group (knuckles)
Excellent Binding Quality
11-14# (3pc Box) or 13/15# (2pc box)
Can be private labeled



NATURAL JUICE BONELESS BUFFET HAM



Bell's Mill Label
Hickory Smoked - No artificial smoke
Fully Cooked
One muscle group (knuckles)
Excellent Binding Quality
9/12# (3pc Box)
Can be private labeled



Our Bell's Mill Boneless Buffet Hams feature a flavorful, tender, juicy and versatile product. This ham is Hickory smoked, tender and tasty. Slice it, dice it, serve it cold or hot, the applications for this ham are endless.

SKINLESS/SHANKLESS HAMS

SKINLESS SHANKLESS BONE-IN DEFATTED HAM



Bell's Mill Label
 Hickory Smoked - No artificial smoke
 External Fat Cover is Minimal
 Fully Cooked
 Water Added
 Available in wholes (2pc box) & halves (4pc box)
 Available 14-17# & 17#up
 Can be private labeled



SKINLESS SHANKLESS BONE-IN DEFATTED HAM NATURAL JUICE

Quality Classic Label
 Hickory Smoked - No artificial smoke
 External fat cover is minimal
 Fully Cooked
 Available in wholes (2pc box) & halves (4pc box)
 Natural juice
 Available 14-17# & 17#up
 Can be private labeled



Starting with the finest and freshest raw material possible, our Skinless-Shankless Ham is hand trimmed and mildly cured with premium ingredients. Keeping the bone to retain all the natural succulence, these flavorful hams bring a rich, old-fashioned goodness to any table.



SKINLESS/SHANKLESS HAMS

NATURAL JUICE - SPIRAL SLICED

Quality Classic Label
Hickory Smoked - No artificial smoke
External fat cover is minimal
Fully Cooked
Available in wholes (2pc box) & halves (4pc box)
Natural Juice
Spiral Sliced
Available 14-17# & 17#up
Foil wrap available
Net and glaze pkt. option
Can be private labeled



Closely trimmed and hickory smoked, this bone-in ham is a spiral sliced Holiday staple. This ham is placed on a spindle and sliced around the bone, in a ribbon-like cut. Beautifully presented, the spiral sliced Quality Classic provides a portion controlled, easy and simple serve, that boasts flavorful convenience!

BONE-IN HAM

BELL'S MILL WA BONE-IN HAM (SKIN-ON)

Bell's Mill Label
Hickory Smoked - No artificial smoke
Skin-on
Fully Cooked
2pcs/box
20-23#
Water Added
Available Combo Only / 40 case minimum
Special Order - Extended lead time



BELL'S MILL MINI BONE-IN HAM

Bell's Mill Label
Hickory Smoked - No artificial smoke
Fully Cooked
6 pc whole hams / 12 pc half hams
5-8#
Water Added
Can be private labeled



This single muscle, bone-in ham will satisfy even the most particular ham connoisseur. The versatility of this product is truly one of its greatest assets. Lean, delicious, and produced from select raw material, it makes a wonderful center of the plate presentation and the small unit size adds to the versatility.

PIT HAMS FLAT BOTTOM TEARDROP

Prairie Gold Label
Hickory Smoked - No artificial smoke
Boneless
Fully Cooked
Raw Material: inside & outside
Heavy Internal Fat Removed
External fat cover is minimal
Excellent Bind
Available in flat bottom or teardrop
3 pc Whole Hams - 9-11# average
6 pc Half Hams - 5-6# average
12 pc Quarter Hams - 2-3# average
Teardrop pit - 9-11# only
Can be private labeled



Prairie Gold Label
Hickory Smoked - No artificial smoke
Fully Cooked
Raw Material: inside & outside
Heavy Internal Fat Removed
External fat cover is minimal
Excellent Bind
3 pc Whole Hams - 9-11# average
6 pc Half Hams - 5-6# average
12 pc Quarter Hams - 2-3# average
Can be private labeled

TAVERN HAM FLAT BOTTOM



The Prairie Gold Pit and Tavern Ham are absolutely two of the finest boneless hams available in today's marketplace. Produced from select raw material, we use only inside & outside muscles in the manufacture of these products. After a carefully monitored curing process, the hams are hickory smoked with certified hickory chips producing a grand and delicious ham for any table.



BONELESS CARVER HAM



- Bell's Mill Label
- Hickory Smoked - No artificial smoke
- Outside, eye and inner shank muscle
- Fully Cooked - Excellent Bind
- Flat bottom
- External Fat Cover is Minimal
- Can be private labeled
- Wholes-4pc/box
- 6-8# average per piece
- Halves-8pc/box
- 3-4# average per piece

THE BONELESS CARVER HAM IS TRUE CULINARY PERFECTION. THIS HAM IS JUICY, TASTY AND FLAVORFUL. THE BONELESS FLAT BOTTOM NATURE OF THIS HAM MAKES IT PERFECT FOR CARVING, BUT THE VERSATILITY ACCOMMODATES SO MANY MORE APPLICATIONS.



- Prairie Gold Label
- Hickory Smoked - No artificial smoke
- Fully Cooked
- Raw Material: Inside & Outside
- Excellent Bind
- 12 pc Whole Hams - 2-3# average
- Ingredients: Cured with Water, Salt, Sugar, Sodium Phosphate, Sodium Erythorbate, Sodium Nitrite
- Can be private labeled

MINI BONELESS HAM



The Prairie Gold Mini Boneless Ham packs in loads of flavor. It's small size makes it the perfect retail ready ham for your market. Produced from select raw material, we use only knuckle muscles in the manufacture of these products. After a carefully monitored curing process, the hams are hickory smoked with certified hickory chips producing a grand and delicious ham for any table.



BACON

15# SINGLE CUT BACON



15# Single Cut (layout) Bacon

Yield varies per case

Shelf life from pack date or freeze by (60 days)

Slice Counts Available:

7/9 - 9/11 - 10/12 - 12/14 - 14/18 - 18/22

Available Flavor(s)

Hickory, Hickory Double Smoke, Maple, Applewood Double Smoke, Pepper, Uncured Applewood Smoked Brown Sugar, Honey Jalapeno, Fry-Rite Hickory



15# Single Cut Bacon is one of the most consistent quality smoked bacons available. Our bellies are trimmed leaving a highly desirable center cut slab from which to slice bacon to your exact slice count requirements. Sliced onto flame-retardant parchment paper for easy handling.

12# HRI SLICED BACON

12# HRI Sliced Bacon

Yield varies per case

Shelf life from pack date or freeze by (60 days)

Slice Counts Available:

7/9 - 9/11 - 10/12 - 12/14 - 14/18 - 18/22

Available Flavor(s)

Hickory, Hickory Double Smoke, Maple, Applewood Double Smoke, Pepper, Uncured Applewood Smoke Brown Sugar, Honey Jalapeno, Fry-Rite Hickory



12# HRI is the same quality as our single cut bacon except the 12# case is separated in approximately 1# quick grab bunches.



FRY-RITE BACON

Hickory Smoked

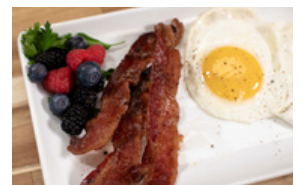
Shelf Life from pack date or freeze by (60 days)

Available in 15# Single Cut or 12# HRI

Slice Counts Available:

7/9 - 9/11 - 10/12 - 12/14 - 14/18 - 18/22

Yield varies per case



Fry-Rite bacon is a consistent and proven overachiever in the bacon world. Boasting less shrinkage than regular bacon, Fry-Rite also yields a finished product that lays flat, firm and crisp. Plate presentation is easy with Fry-Rite bacon.



SLICED SLAB BACON

De-Rind Sliced Slab Bacon

Shelf life from pack date or freeze by (60 days)

Available in 15# bulk - 25# bulk - 3/5# COV

Slice Counts Available:

7/9 - 9/11 - 10/12 - 12/14 - 14/18 - 18/22

Available Flavor(s)

Hickory, Hickory Double Smoke, Maple, Applewood Double
Smoke, Pepper, Honey Jalapeno,
Uncured Applewood Smoke Brown Sugar
Can be private labeled

Rind-On Sliced Slab Bacon

Shelf life from pack date or freeze by (60 days)

Available in 25# bulk - 12/1# - 8/2.5#

Slice Counts Available:

7/9 - 9/11 - 10/12 - 12/14 - 14/18 - 18/22

Available Flavor(s)

Hickory
Can be private labeled



18/1# SLICED BACON



Bell's Mill
18/1# Bacon
Shelf life from pack date or freeze by (60 days)

Slice Counts Available:
7/9 - 9/11 - 10/12 - 12/14 - 14/18

Available Flavor(s)
Hickory, Hickory Double Smoke, Maple, Applewood Double Smoke, Pepper, Honey Jalapeno, Uncured Applewood Smoke Brown Sugar

Brick Style Packaging
Can be private labeled



8/2.5# PEPPER BACON

Bell's Mill Label
8/2.5#
Hickory Smoked Pepper Bacon
Shelf life from pack date or freeze by (60 days)
Slice Counts Available:
7/9 - 9/11 - 10/12 - 12/14 - 14/18
Brick Style Packaging
Can be private labeled





WHOLE SLAB BACON

De-Rind Slab Bacon

Shelf life from pack date or freeze by (60 days)

2 piece box - 5 piece box

Available Flavor(s)

Hickory, Hickory Double Smoke, Maple,
Applewood Double Smoke, Pepper, Honey Jalapeno,
Uncured Applewood Smoke Brown Sugar
Can be private labeled

Rind-on Slab Bacon

Shelf life from pack date or freeze by (60 days)

Available in 2 piece or 5 piece boxes

Available Flavor(s)

Hickory



ECONOMY BACON



6/5# Economy Sliced Bacon

Generic Label
Shelf life from pack date or freeze by (60 days)
6/5# boxes

Available Flavor(s)

Hardwood, Maple, Applewood Double Smoke Pepper, Pepper, Honey Jalapeno, Uncured Applewood Smoke Brown Sugar



15# Economy Sliced Bacon (Layout)

Generic Label
Shelf life from pack date or freeze by (60 days)
15# Bulk Layout

Single cut

Available Flavor(s)

Hardwood



20# Economy Sliced Bacon (Platter Style)

Generic Label
Shelf life from pack date or freeze by (60 days)
20# Bulk

Platter Style

Available Flavor(s)

Hardwood



BACON ENDS & PIECES



6/5# Bulk BEP's

Generic Label

Shelf life from pack date or freeze by (60 days)

6/5# boxes or 9/2# COV (Hardwood Only)

Available Flavor(s)

Hardwood, Pepper, Maple, Honey Jalapeno, Uncured

Applewood Smoke Brown Sugar,

Applewood Double Smoke Pepper



6/5# Rind-on BEP's

Generic Label

Shelf life from pack date or freeze by (60 days)

6/5# boxes

Available Flavor(s)

Hickory



50# Bulk BEP's

Generic Label

Shelf life from pack date or freeze by (60 days)

50# Bulk

Available Flavor(s)

Hardwood

Special Order - extended lead time



OTHER PRODUCTS



PORK LOIN & CHOPS



Center Cut Smoked Bone-in Pork Chops

Bell's Mill Label
Shelf life from pack date or freeze by (60 days)
Hickory Smoked
Fully Cooked
10-12oz Average
10/2pc pkgs. or bulk box
Special Order - extended lead time
Can be private labeled



Center Cut Smoked Bone-In Pork Loins

Generic Label
Bone-In
Shelf life from pack date or freeze by (60 days)
Hickory Smoked
Fully Cooked
12-17# Average
2pc/box
Approximately 11 Ribs per loin





APPLE SMOKED BONELESS LOINS

6pc-1/3 Apple Smoked Boneless Loins

Bell's Mill Label

Shelf life from pack date or freeze by (60 days)

Applewood Smoked

Fully Cooked

3# Average per piece

6pc/box

Can be private labeled

**Can be cut into Boneless Chops



STEAKS, SHANKS, CHOPS



Smoked Ham Steaks

Prairie Gold Label
Hickory Smoked
Fully Cooked
Shelf life from pack date or freeze by (60 days)
12-14oz Average
16pc/box + end chunks
Can be private labeled



Smoked Ham Chops

Prairie Gold Label
Hickory Smoked
Fully Cooked
Shelf life from pack date or freeze by (60 days)
7-8oz Average
17pc/box
Can be private labeled



Ham Shanks

Hickory Smoked
Fully Cooked & Cured / Frozen
30# Box
Raw Frozen
50# Box
35 case minimum order
Extended Lead Time





CANADIAN BACON

Bell's Mill Label

Hickory Smoked - No artificial smoke

Fully Cooked

Shelf Life from pack date or freeze by 60 days

Available in:

3pc Stick

8/2.5# (extended lead time)

24/1.5#(extended lead time)

Can be private labeled



OTHER PRODUCTS

2pc Cured Smoked Beef

Prairie Gold Label
Hickory Smoked
Fully Cooked
Shelf life from pack date or freeze by (90 days)
3-4# Average
2pc/Box
Can be private labeled



Fully Cooked Ham & Pork Meatballs

Bell's Mill Label
Keep Frozen
Fully Cooked
Shelf life from pack date (6 months)
4oz Meatballs - 10/6pc per Box
2oz Meatballs - 18/8pc per Box
Bulk available
Special Order - Extended Lead Time
Can be private labeled



Shredded Pork

Generic Label
Fully Cooked
Shelf Life from pack date or freeze by (28 days)
2/5# (catch weight) or 5/2# (catch weight)
Special Order - extended lead time
Can be private labeled





SMOKED TURKEY DRUMS

Toms

30# Case

Approximately

17/case & 28oz each

Fully Cooked/Smoked/Frozen

Can be Private Labeled

Product Description:

Fully Cooked/Smoked Turkey Drum

Raw Material:

Turkey Drum

Allergens: None



SAUSAGE



SAUSAGE



Link Sausage

Shelf life frozen (6-months)
Available : 1oz or 2oz links (10# Case)
1oz retail pack (16/8oz)
Can be private labeled



Patty Sausage

Shelf life frozen (6-months)
Available: 2oz regular and large diameter
4oz (large diameter) patties
8# Case
Can be private labeled





GROUND PORK - SAUSAGE - ITALIAN SAUSAGE

Generic Label
Shelf Life Frozen (6-months)

Ground Pork - Ground Sausage
4/5# Tubes - 3/10# Tubes

Italian Sausage
2/5# Tubes



BRATS & GRILLERS

Skinless Bratwurst

Bell's Mill Label
 Frozen
 12oz package - 4pc/package 12-12oz pkgs/case
 Bulk Box Available
 Flavors:
 Original, Cheddar, Jalapeno Cheddar,
 Bacon Cheddar, Philly, Tailgate
 Can be private labeled
 **Available May thru August



Pork Patties

Bell's Mill Label
 Frozen
 3# Bags - 1/3# Patties
 12 Bags/Master
 16# Bulk Patties
 Flavors -
 Pork, Pork & Bacon, Pork & Bacon & Cheddar,
 Bratwurst Patties
 Can be private labeled
 **Available May thru August



Perfect for tailgating, backyard cookouts, family picnics, fundraisers, breakfast applications, etc. Easy to cook on a flat, charcoal or gas grill. Pork patties pass through a freeze tunnel to lock in moisture and freshness for delicious flavor every time.



**FRESH
PRODUCT**

RAW PRODUCTS



**CURED SWEET PICKLE
SKINLESS DE-RIND PORK BELLIES**

2 PIECE BOX - #13/PIECE
6 PIECE BOX - #13/PIECE
POLY LINED BAG

**FROZEN
RIND-ON/DERIND BELLIES**

10/12# - 1PC BOX - RIND-ON
12/14# - 2PC BOX - DERIND
POLY LINED BAG
**NO COMBOS AVAILABLE OF BELLIES



**CURED SWEET PICKLE
BONELESS PIT HAM**

SWEET PICKLE
3 PIECES / BOX
POLY LINED BAG
12# AVERAGE PER PIECE

**CURED SWEET PICKLE
SKINLESS/SHANKLESS BONE-IN
DEFATTED HAM**

2 PIECES / BOX
20# AVERAGE PER PIECE
POLY LINED BAG



A DIVISION OF  MIDWEST
QUALITY
WHOLESALE.

Our success depends on the success of our customers.

1611 E 2nd Street, P.O. Box 280 - Webster City, Iowa 50595

Phone: 515-832-1130

Email: customersales@webstercitycustommeats.com

www.webstercitycustommeats.com